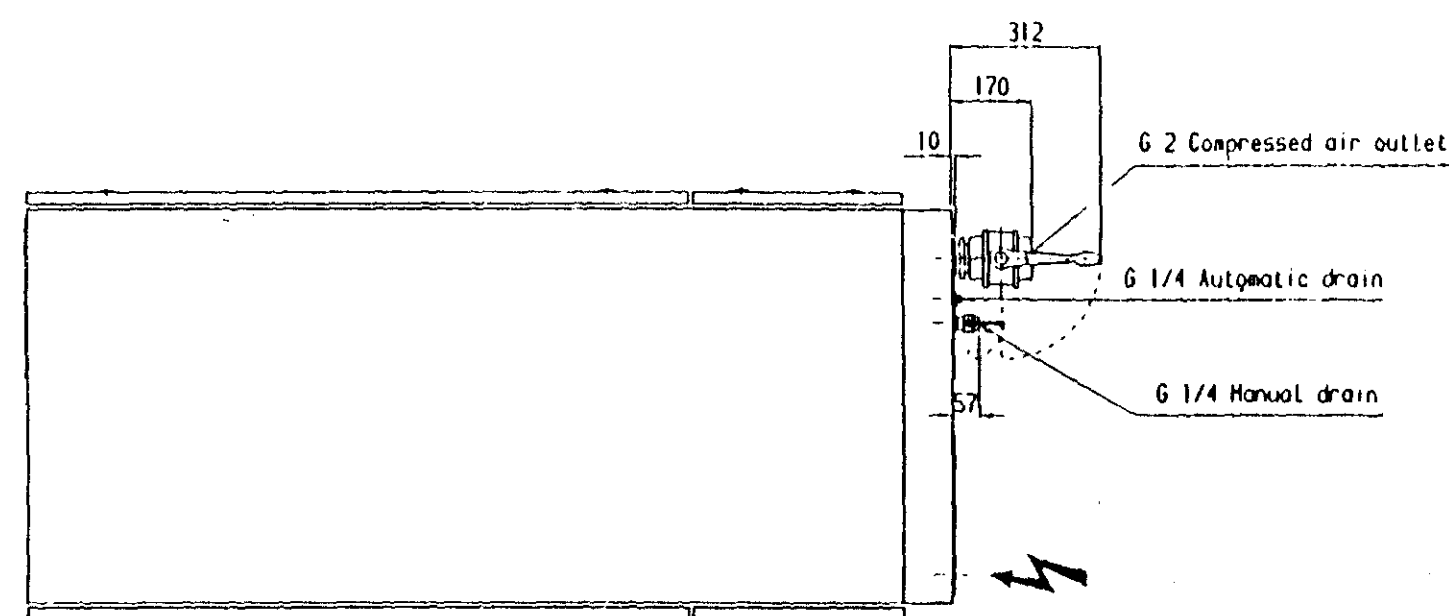


NOTE
THE G.A. RANGE OF COMPRESSORS HAVE THE ELEMENT AND MOTOR MOUNTED ON VIBRATION DAMPERS WITHIN THE ACCOUSTIC CANOPY. THIS OBVIATES THE NEED FOR ANCHOR BOLTS IN THE MAJORITY OF INSTALLATIONS, AND ONLY REQUIRES THE PROVISION OF A LEVEL FLOOR CAPABLE OF SUPPORTING THE MACHINE WEIGHT.

Net Mass GA 26: 885Kg

HYDRO
REC
-7



HYDRO - ELECTRIC PETERHEAD GENERATING STATION			
CONTRACT NO. 2052600/C01	DRAWING NO. 036/1321/7101	SHEET NO. 1	REV
JOHN BROWN		John Brown Engineering Limited Clydebank, Dunbartonshire G81 1Y	
J.B.E. ORDER NUMBER :			
J.B.E. DRAWING NUMBER : 0998-7913-006 REV. B			

APPROVED TO J.B.E. 15/5/8 COMMENTS FIRST ISSUE FOR CONTRACT. THIS DWG SUPersedes ELM 9701 04A 16 26/3 TECHNICAL DETAILS UNALTERED 90	CLIENT JOHN BROWN ENGINEERING LTD.
	TITLE G.A. 26 COMPRESSOR DIMENSION DWG.
	A.C. ORDER No. 161270 PROJECT No. [blank] CLIENT ORDER No. [blank]
	USED ON GA 26 SUB FORMAT [blank]
P.O. Box 79, Swallowdale Lane Hemel Hempstead, Herts. HP2 7HA	A.C. DRG No. 9701-0918-21
© All rights of this drg rest at any time with Atlas Copco (G.B.) Ltd. It may not be copied or reproduced without written consent, neither may it be communicated or rendered accessible to third parties, and is subject to return on demand.	